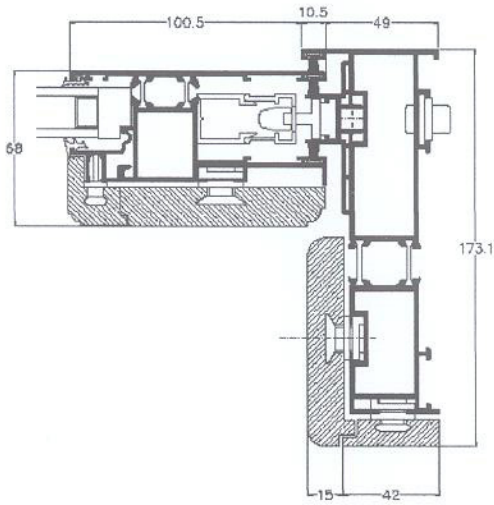


SK180s TT Series Data sheet

The SK180sTT lift & slide window with a load of up to 250 Kg per wing, is the ideal solution for those who wish to enhance at best the style of their own home. The simplicity of its use and the reliability of the system allow it to be used for very large glass-panelled surfaces. The high level of thermal and acoustic insulation allows you to enjoy the comfort of your home regardless of the temperature outside.



Technical characteristics:

Glass application: slide-in system for aluminium wing

Aluminium alloy: 6060 (UNI 3569).

Wood types: oak, ash, cherry, maple

Frame thickness 173.6 mm

Wing thickness 68 mm

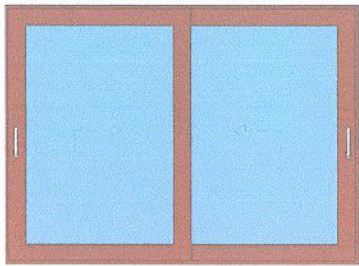
Thermal performance*:

slide two wings $U_w 1,9 \text{ W/m}^2\text{K}$

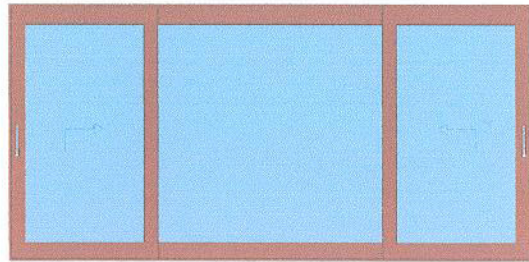
Test:

Thermal (UNI EN 1077-2) $U_f 3,74 \text{ W/m}^2\text{K}$

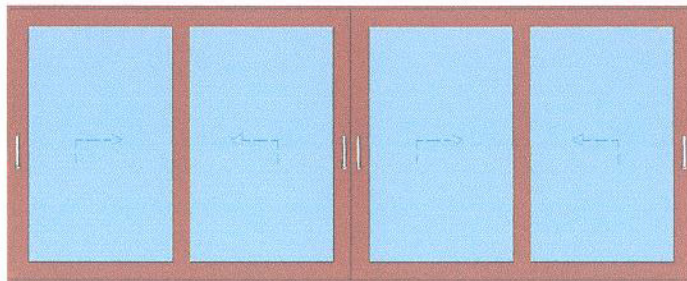
TYPES ACHIEVABLE



Lift & slide 2 wings



Lift & slide 3 wings



Lift & slide 4 wings

* Calculation done according to UNI EN ISO 10077 -1 on a window 1230 X 1480 with a glass $U_g=1,0$