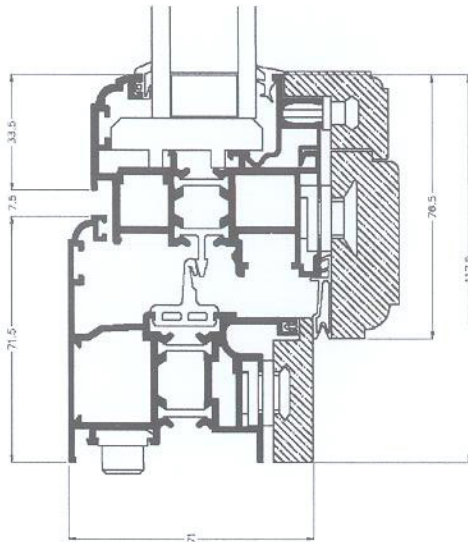


SW70TT Series Data sheet

The SW70TT thermal break series is characterised by an aluminium snap-lock glazing bead that guarantees the insulation of the internal wood from external pressure: this makes the installation and the maintenance of the windows easier. The system allows a significant reduction of home heating and air conditioning costs thanks to the high thermal performance with a U_w value of $1,1 \text{ W/m}^2\text{K}$.



Technical characteristics:

System to open-joint

Glass application: with an aluminium snap-lock glazing bead covered by the wooden snap-lock frame.

Aluminium alloy: 6060 (UNI 3569).

Wood types: oak, ash, cherry, maple

Frame thickness 71 mm

Wing thickness 90 mm

Thermal performance*:

one-wing window:

$U_w 1,4 \text{ W/m}^2\text{K} \rightarrow U_g 1,1$

$U_w 1,3 \text{ W/m}^2\text{K} \rightarrow U_g 0,9$

$U_w 1,1 \text{ W/m}^2\text{K} \rightarrow U_g 0,7$

two-wings window:

$U_w 1,5 \text{ W/m}^2\text{K} \rightarrow U_g 1,1$

$U_w 1,4 \text{ W/m}^2\text{K} \rightarrow U_g 0,9$

$U_w 1,3 \text{ W/m}^2\text{K} \rightarrow U_g 0,7$

Test:

Air (UNI EN 1026)

4

Water (UNI EN 1027)

9A

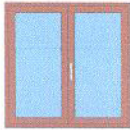



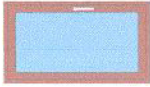
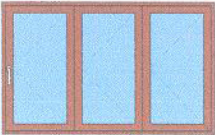
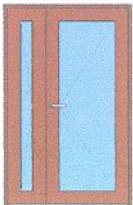
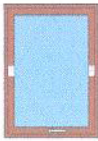
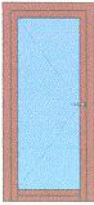
Wind (UNI EN 12211)

C5

Thermal (UNI EN 12567-1)

$U_f 1,82 \text{ W/m}^2\text{K}$

TYPES ACHIEVABLE

				
Window 1 or more wings	French window 1 or more wings	Fixed glazing panelling	Parallel sliding windows	Wasistas
				
Folding windows	Entrance doors	Pivot-hung windows	Externally-opening windows	

* Calculation done according to UNI EN ISO 10077 -1 on a window 1230 X 1480